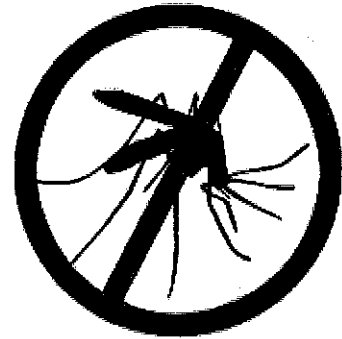


LEBANON COUNTY TIRE COLLECTION

APRIL 30TH, 2025 FROM 8AM-4PM

LEBANON EXPO CENTER

80 Rocherty Rd, Lebanon, PA 17042



LEBANON COUNTY RESIDENTS

Please bring proof of address - driver's license, phone bill, etc. Out-of-county persons or tire related businesses must pay for all tires they dispose of at the collection.



PLEASE PRE-REGISTER BY MONDAY

APRIL 14TH

Scan the QR code or contact the person on this flyer.

**TIRES MUST BE
OFF THE RIM,
DRAINED OF
WATER,
UNBURNED, AND
NOT EXCESSIVELY
DIRTY.**

**10 AUTO OR 1 OVERSIZED TIRE CAN
BE COLLECTED FOR FREE, AS LONG
AS FUNDS ARE AVAILABLE IN YOUR
MUNICIPALITY. INDIVIDUALS WILL
BE CHARGED AFTER THESE FUNDS
ARE DEPLETED AT A COST OF
\$4/AUTO TIRE AND \$40/OVERSIZED
TIRE (≥25 INCH DIAMTER)**

**QUESTIONS? CONTACT LYDIA MOHN AT 717-277-
5275 EXT. 112 OR LYDIA.MOHN@LCCD.ORG**



Pre-Registration Form

Lebanon Tire Collection - Lebanon Expo Center

April 30th from 8 a.m. to 4 p.m.

80 Rocherty Road Lebanon, PA 17042

The collection is open to Lebanon County Residents. Please bring proof of address- driver's license, phone bill, etc. Out of-county persons or tire related businesses must pay for all tires they dispose of at the collection. 10 automobile OR 1 oversized (≥25 in. diameter) tire can be collected for free, so long as funds are available in an individual's municipality. Individuals will be charged after municipality funds are depleted. PRE-REGISTRATION opens Monday, February 24th, 2025, and closes Monday, April 14th, 2025.

Please fill out the form and email it to Lydia.mohn@lccd.org For questions or verbal registration, please call 717-277-5275 ext. 112. You may also register by scanning the QR code on the right bottom corner, or by visiting our website at www.lccd.org/mosquito-borne-disease-program

Name (first and last): _____

Address: _____

Phone number: _____

Number of automobile or truck tires (10 max - \$4.00 each extra): _____

Number of oversized (≥25 in. diameter) tires (1 max - \$40.00 each extra): _____

Please indicate which municipality you reside in:

Annville Twp		North Cornwall Twp	
Bethel Twp		North Lebanon Twp	
Cleona Boro		North Londonderry Twp	
Cold Springs Twp		Palmyra Boro	
Cornwall Boro		Richland Boro	
East Hanover Twp		South Annville Twp	
Heidelberg Twp		South Lebanon Twp	
Jackson Twp		South Londonderry Twp	
Jonestown Boro		Swatara Twp	
Lebanon City		Union Twp	
Millcreek Twp		West Cornwall Twp	
Mt. Gretna Boro		West Lebanon Twp	
Myerstown Boro			
North Annville Twp			

